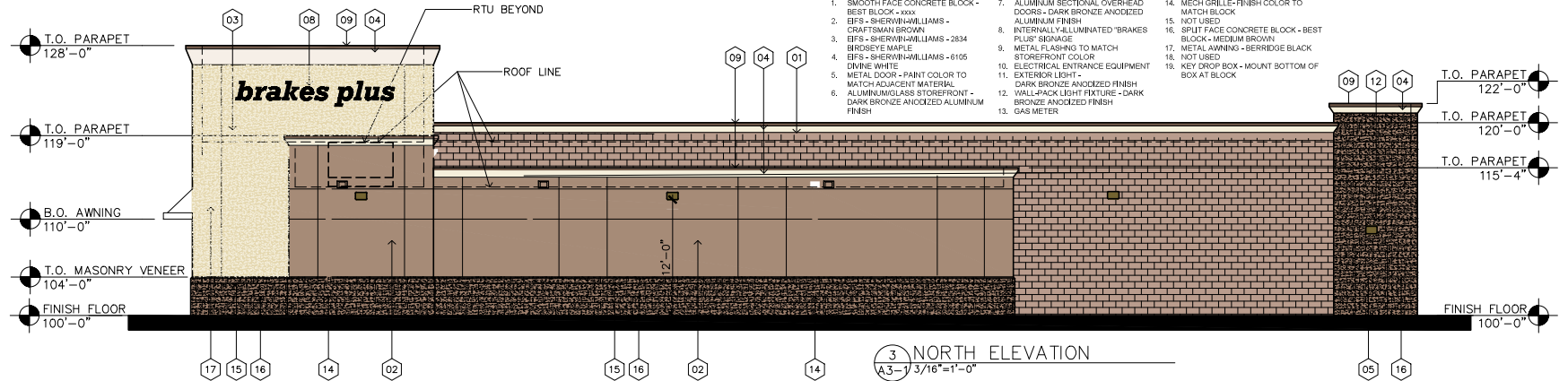


KEY NOTES:

1. SMOOTH FACE CONCRETE BLOCK - BEST BLOCK - BRX
2. EFS - SHERWIN-WILLIAMS - CRAFTSMAN BROWN
3. EFS - SHERWIN-WILLIAMS - 2834 BROSSEY MAPLE
4. EFS - SHERWIN-WILLIAMS - 6105 DIVINE WHITE
5. METAL DOOR - PAINT COLOR TO MATCH ADJACENT MATERIAL
6. ALUMINUM/GLASS STOREFRONT - DARK BRONZE ANODIZED ALUMINUM FINISH
7. ALUMINUM SECTIONAL OVERHEAD DOORS - DARK BRONZE ANODIZED ALUMINUM FINISH
8. INTERNALLY ILLUMINATED 'BRAKES PLUS' SIGNAGE
9. METAL FLASHING TO MATCH STOREFRONT COLOR
10. ELECTRICAL ENTRANCE EQUIPMENT
11. EXTERIOR LIGHT -
12. WALL-PACK LIGHT FIXTURE - DARK BRONZE ANODIZED FINISH
13. GAS METER
14. MESH GRILLE - FINISH COLOR TO MATCH BLOCK
15. NOT USED
16. SPLIT FACE CONCRETE BLOCK - BEST BLOCK - MEDIUM BROWN
17. METAL AWNING - BERRIDGE BLACK
18. NOT USED
19. KEY DROP BOX - MOUNT BOTTOM OF BOX AT BLOCK



BRAKES PLUS
3010 N. GLASSFORD HILL ROAD
PRESCOTT VALLEY, ARIZONA

ARCHITECT OF RECORD

REVISION	DATE	COMMENTS

ARCHITECT: JCB JR.
CLIENT: JCB JR.
DRAWN BY: NLS
CHECKED BY: NLS
DATE OF ISSUE: 04/09/24



A SHEET